

The Conveyor



WHEAT NEWS

WINTER 2009

WHEAT INDUSTRY SYMPOSIUM

The 2nd Annual Ontario Wheat Industry Symposium was a big success as it drew industry representatives from all over the province. The theme of the event: Quality and Grading Issues Facing Ontario Wheat made for excellent presentations and even better discussion.

The Wheat Industry Symposium is an opportunity for non-producers involved in the wheat industry to gather and discuss the challenges and successes they are experiencing. The Ontario Wheat Producers' Marketing Board finds value in hosting such an event because it ensures the board stays connected and involved with all levels of the industry. This event attracted representatives from seed companies, elevators, millers, merchandisers and input supply companies.

Attendees heard information from Peter Tuinema and Crosby Devitt, OWPMB staff members, about export development and current research focused on improving wheat grading techniques. Jeff Reid, Chief Executive Officer of SeCan, also addressed the audience with a presentation about the importance of spring wheat and how to "maintain momentum" after a difficult year. A story based on Jeff's presentation is available in ONWheat magazine.

The highlight of the entire day was the panel discussion on grading issues in Ontario. On the panel was Norm Woodbeck, Acting Chief Inspector for Canada from the Canadian Grain Commission, Todd Ross who is a Grain Merchandiser with Parrish & Heimbecker and Bev Hill, Owner of Hill & Hill Farms and Varna Grain. The three men represented many different areas of the wheat industry and had unique insight into the challenges and successes of Ontario's wheat grading program.

Ross and Hill were especially concerned about the subjectivity of wheat grading and expressed interest in changing some of our grading standards. Woodbeck brought clarity to how the Canadian Grain Commission works and some of the avenues available to make long term changes to grade standards. In addition, Woodbeck said he would look into making better communication methods available to stakeholders during harvest next year. This panel is also featured in the centre spread of ONWheat magazine.

CONTENTS

- Wheat Industry Symposium
- Market Commentary
- MoU Update
- 2009 Annual County Meetings
- Spring Wheat Performance Trials
- Agricorp Update
- Ontario Grains & Oilseeds Update
- 50th Anniversary
- Farmers Feed Cities
- 2009 Joint Corn, Soybean, Wheat and Coloured Bean Conference

Ontario AgriCentre
100 Stone Road West, Suite #201
Guelph, ON, N1G 5L3
Tel: (519) 767-6537

Fax-General: (519) 767-9713
Fax-Marketing Department: (519) 767-1939
Email: general.mail@ontariowheatboard.com
Website: www.ontariowheatboard.com

HOURS OF OPERATION

8:30 A.M. TO 4:30 P.M. – Monday to Friday

ELEVIEW UNIQUE NUMBER

Please refer to the mailing label on the last page of The Conveyor for your new Eleview (formerly Agri-e) unique number to be used by producers

To correct any information, please call:
1-866-766-2324

DAILY CASH WHEAT PRICES

Pricing Line: 1-800-943-2809

JOHN JORDAN FARM MARKET NEWS

1-877-637-6397 (Opt 3)

OWPMB WEEKLY AUDIO MARKET COMMENTARY

1-877-637-6397 (Opt 3)

BOARD STAFF

Larry Shapton <i>General Manager</i>	Tom Farfaras <i>Business Manager</i>
Peter Tuinema <i>Manager of Programs and Policy</i>	Crosby Devitt <i>Manager of Research and Innovation</i>
Erin Fletcher <i>Stakeholder Relations Manager (maternity leave)</i>	Claire Cowan <i>Communications Coordinator</i>
Alison Walden-Coleman <i>Research Projects Coordinator</i>	Todd Austin <i>Grain Merchandiser</i>
Rod Crinklaw <i>Asst Grain Merchandiser</i>	Colleen Clark <i>Marketing Assistant</i>
Louise Bignell <i>Executive Assistant</i>	Darci Wheeler <i>Administrative Asst</i>

John Kenny
Programmer Analyst

MARKETING

Market Commentary:

By Peter Tuinema, Manager of Programs and Policy, December 2008

2008 Winter Wheat Crop

The 2008 winter wheat crop has been estimated by OMAFRA to be 1,225,000 acres with a yield of 81.6 bushels per acre, for a total crop of 2,720,000 tonnes. This is up from last year's 595,000 acres and 73.6 bushels per acre for a total crop of 1,191,000 tonnes. Earlier harvested wheat graded #2 or better. Due to late July rains the remaining crop mostly graded #3 due to mildew with some grading feed due to fusarium or sprouts. The domestic milling industry usually uses 600,000 tonnes, 600,000 tonnes or more will be exported to the nearby U.S. for milling, and at least 600,000 tonnes has been exported off shore. Egypt was a large buyer purchasing 180,000 tonnes. Due to the corn/wheat price relationship substantial tonnage will go into the Ontario and nearby U.S. feed market.

Wheat prices have been in a steady decline since August when the value of old crop SRW was \$250 per tonne or \$6.80 per bushel. The price in late November sits at \$160 per tonne or \$4.37 per bushel. Producers that still have 2008 crop left to sell are finding it hard to justify selling their remaining stocks at these prices when they sold their earlier wheat at much higher prices.

2008 Spring Wheat Crop

The 2008 spring wheat crop has been estimated by OMAFRA to be 170,000 acres with a yield of 51.2 bushels per acre, for a total crop of 236,000 tonnes. This is down from last year's 180,000 acres and a total crop of 250,000 tonnes. The spring wheat crop had a high incidence of Fusarium damage. Up to 50 percent of the crop was graded #3 or better. The balance of the crop was graded as either feed or sample. This presented challenges in marketing the crop as well as moving it off farm to a marketable position.

World Production

World production has rebounded from a year ago when the world was faced with drought and dry conditions in many areas of the globe. Some countries which had withdrawn from the export market due to low volumes of wheat have re-entered after acceptable quantities were produced this year. Although wheat stocks are still historically tight, this additional wheat on the world market has led to softer futures prices.

2009 Winter Wheat Crop

Winter wheat plantings in Ontario were down this fall due to the late harvest of soybeans. Plantings were forecast to be from 700,000 to 900,000 acres. Due to better than average planting conditions in October, plantings ended up at 950,000 acres. This is down from last year's record planting of 1,225,000 acres. Ontario farmers remain optimistic that wheat will give a profitable return.

New crop values have also tailed off since the summer highs when SRW was valued at \$285 per tonne or \$7.75 per bushel; it now sits at \$170 per tonne or \$4.62 per bushel. Producers have not been aggressively forward selling the 2009 crop due in part the memory of record high prices still fresh in their minds.

Even though acreage is down from last year, there is enough wheat planted to produce roughly 2 million tonnes of wheat, which means Ontario will again be in a position to export wheat. This is good news as it will help build long term relationships with soft wheat importing countries if Ontario can consistently supply volumes of quality wheat. The board has been pursuing these markets with visits to some of the wheat importing countries as well as having them visit Ontario.

IAOM in Tanzania

OWPMB staff made a trip to Tanzania, Africa to the International Association of Operative Millers (IAOM) conference and expo. Two additional industry representatives joined the staff and helped spread the word about Ontario Wheat. The goal of this trade mission was to attract potential buyers from the Middle East and Africa. These areas are large importers of HRW and SRW wheat. Staff and industry representatives promoted Ontario Wheat and made many connections that will hopefully lead to more markets for Ontario wheat producers.

Ontario Wheat at the Royal

In celebration of our 50th anniversary, the OWPMB hit Toronto in full force with a booth at the Royal Agricultural Winter Fair in November. The booth featured trivia about Ontario wheat, a small hand-operated mill and bushels baskets of different types of wheat. The booth was busy with children and adults who were interested in learning more about where their bread and cookies come from.

The Royal Winter Fair gives farmers an opportunity to talk to their urban counterparts about what they do and why they do it. Hopefully many of those people went home with little more understanding of Ontario wheat producers and the products we grow.

MOU Update

Ontario Farm Products Marketing Commission held a producer expression of opinion vote which ended on September 30, 2008. The votes have been tabulated by the Commission and it is now in the hands of the Minister of Agriculture to make a final decision as to whether or not the Ontario Wheat Producer' Marketing Board, the Ontario Corn Producers' Association and the Ontario Soybean Growers will merge as one organization. As of print time no decision has been made. For the most current information, please visit www.grainfarmersontario.ca.

MARKETING CONTINUED

WHEAT (E) NEAREST FUTURES... weekly OHLC plot



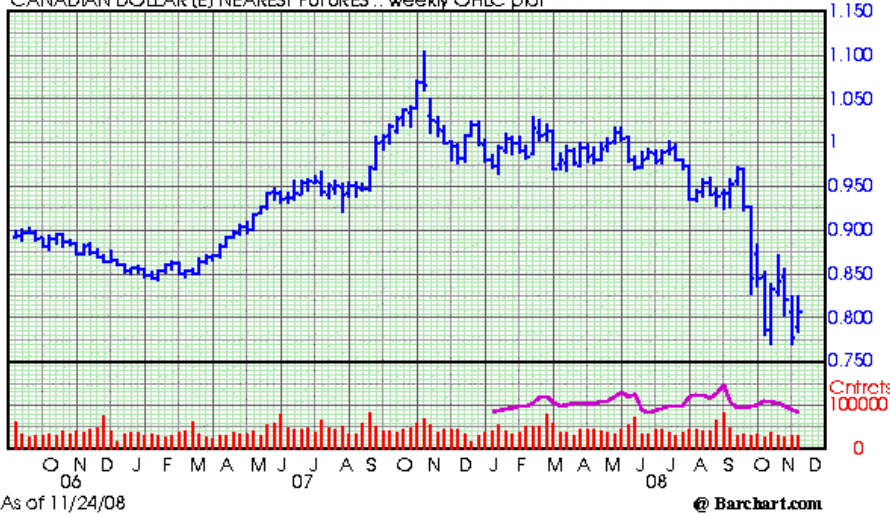
Nearby CBOT futures started the year at record highs above \$9.00 per bushel reached new record highs of \$13.50 per bushel then dropped to lows of \$4.90 per bushel before ending November at \$5.42.

SPRING WHEAT (E) NEAREST FUTURES... weekly OHLC plot



Nearby MGEX futures started the year at record highs above \$11.00 per bushel reached new record highs of \$24.00 per bushel before ending November at \$5.99.

CANADIAN DOLLAR (E) NEAREST FUTURES... weekly OHLC plot



The nearby Canadian Dollar has lost substantial value since midsummer when it was close to parity with the US dollar. It has declined steadily with crude oil and other resources and now sits at about 80 cents. This lower exchange rate has meant higher basis prices in Ontario, but any gains in the basis price has been more than offset by losses in the futures market, resulting in a net lower price.

NOTICE OF COUNTY ANNUAL MEETINGS

Your 2009 annual county and regional wheat producers' meeting has been called in accordance with the Ontario Wheat Producers' Marketing Plan. The meeting is called to receive reports and elect the county and regional wheat committees for the coming year and also to conduct such other business as may properly come before the annual meeting. All producers are welcome.

REGION	DATE	LOCATION	TIME
Brant	Jan. 19	West Garden Buffet (lunch included)	12:00 noon
Bruce and Grey	Jan. 29	Ripley-Huron Community Centre, Ripley (joint Wheat, Corn & Soybean)	9:00 a.m.
Dufferin	Jan. 6	Grand Valley FS (joint with Dufferin Soil & Crop)	10:00 a.m.
Dundas	Jan. 7	The Country Kitchen Restaurant, Cty. Rd. 31, Winchester	1:00 p.m.
Durham and York	Jan. 13	Utica Hall (beside John Deer dealer), Utica (joint Wheat & Soybean)	9:30 a.m.
Elgin	Jan. 22	Keystone Complex, Shedden (coffee 9:00 am) (joint Wheat, Corn & Soybean)	9:30 a.m.
Essex	Jan. 19	St. Johns Parrish Hall, Woodslee (joint Wheat, Corn & Soybean)	9:00 a.m.
Frontenac/Leeds/Grenville	Jan. 9	Days Inn, Brockville	10:00 a.m.
Glengarry	Jan. 13	Alexandria Pizzeria Restaurant	7:30 p.m.
Grey and Bruce	Jan. 29	Ripley-Huron Community Centre, Ripley (joint Wheat, Corn & Soybean)	9:00 a.m.
Haldimand and Niagara	Jan. 13	Canfield Community Centre (lunch provided) (joint Wheat, Corn & Soybean)	9:30 a.m.
Halton and Peel	Jan. 20	Peel Regional Police Association Bldg, Mississauga Rd. N. of Hwy #7 (joint Corn, Wheat & Soybean)	9:30 a.m.
Hamilton-Wentworth	Jan. 27	Merritt Hall, Ancaster Fair Grounds, #53 Highway, Ancaster (joint Wheat, Corn & Soybean)	6:30 p.m.
Hastings	Jan. 15	Golden House Restaurant, Mill Street, Frankford	noon
Huron	Jan. 8	Holmesville Community Centre, Holmesville (joint Wheat, Corn & Soybean)	9:00 a.m.
Kent	Jan. 15	Country View Golf Course, Oungah (lunch at a cost) (joint Wheat, Corn & Soybean)	9:00 a.m.
Lanark/Carlton	Jan. 14	St. John's Anglican Church, Richmond (joint Wheat & Corn)	10:00 a.m.
Lambton	Jan. 22	Royal Canadian Legion, Wyoming	7:30 p.m.
Lennox/Addington		For information please contact Chris Grunenfelder (613-354-1913)	
Middlesex	Jan. 13	Coldstream Community Centre, Coldstream (joint Wheat, Corn & Soybean)	9:00 a.m.
Niagara and Haldimand	Jan. 13	Canfield Community Centre (joint Corn, Wheat & Soybean)	9:30 a.m.
Norfolk	Jan. 15	The Greens of Renton Golf Club, Simcoe (joint Wheat, Corn & Soybean)	9:30 a.m.
Northeast/Temiskaming	Nov. 28	Le Grande Boulevard Restaurant, Earlton	9:00 a.m.
Northumberland	Jan. 22	Warkworth Farm Supply, Warkworth	7:30 p.m.
Oxford	Jan. 26	Elm Hurst Inn, Ingersoll (lunch provided) (joint Wheat, Corn & Soybean)	10:00 a.m.
Peel and Halton	Jan. 20	Peel Regional Police Association Bldg, Mississauga Rd. N. of Hwy #7 (joint Wheat, Corn & Soybean)	9:30 a.m.
Prince Edward		For information please contact Allan Moynes (613-969-8064)	
Perth	Jan. 5	Mitchell Golf & Country Club (joint Wheat, Corn & Soybean)	9:15 a.m.
Peterborough and Victoria	Jan. 7	Rockhaven Motor Hotel & Convention Centre, 1875 Lansdowne W., Peterborough // 6:00 p.m. social / 6:30 p.m. dinner - all welcome	7:30 p.m.
Renfrew	Jan. 8	The Country Kitchen Restaurant, Cobden	6:00 p.m.
Simcoe	Jan. 21	Church's Farm Supply, Thornton	10:30 a.m.
Victoria and Peterborough	Jan. 7	Rockhaven Motor Hotel & Convention Centre, 1875 Lansdowne W., Peterborough // 6:00 p.m. social / 6:30 p.m. dinner - all welcome	7:30 p.m.
Waterloo	Jan. 21	Grand Valley Golf & Country Club, Cambridge (joint Wheat, Corn & Soybean) (lunch incl.)	10:00 a.m.
Wellington	Jan. 15	Aboyne Hall, Wellington Place, Fergus (joint Wheat, Corn & Soybean)	9:30 a.m.
York and Durham	Jan. 13	Utica Hall (beside John Deer dealer), Utica (joint Wheat & Soybean)	9:30 a.m.

SPRING WHEAT PERFORMANCE TRIALS

2008 Spring Wheat Performance Trials Cumulative Yield Index¹ Summary

Cultivar	Class ²	Area II West of Frontenac (2,300 – 2,900 Crop Heat Units) Area IV The Dundalk Plains (< 2,500 Crop Heat Units)					Area III East of Frontenac (2,500 – 2,900 Crop Heat Units)					Area V & VI Northern Ontario (< 2,300 Crop Heat Units)				
		5 yr ³	4 yr	3 yr	2 yr	'08	5 yr ³	4 yr	3 yr	2 yr	'08	5 yr ³	4 yr	3 yr	2 yr	'08
AC Brio	HRS						101	100	100	101	92	95	94	98	97	99
Superb	HRS – a	92	93	95	93	95										
606 ⁴	HRS – a	95	95	97	101	101	93	95	95	97	103	92	92	93	98	101
Winfield	HRS – a	91	91	91	93	95	93	93	93	92	95	93	94	97	99	97
Norwell	HRS – a	102	101	102	101	106	96	98	100	101	98	106	108	113	113	114
Sable	HRS – a	106	106	107	110	116	96	96	97	98	98	100	100	102	106	105
Hobson	HRS	97	99	100	98	100	99	99	99	99	98	97	99	103	105	107
Orleans	HRS							98	98	98	91		94	95	96	95
Propel	HRS			101	102	104			100	103	104			101	104	107
Mégantic	HRS – a								98	102	102			101	106	103
Kane	HRS				98	94				97	95				92	93
Waskada	HRS					93					105					103
McKenzie	HRS – a										91					99
Hoffman	EFS – a	116	115	118	120	118	121	121	120	125	129	118	119	118	125	119
Batiscan	EFS – a										121					110
Hallmark	SD			90	89	87								78	76	69
Snowstar	HWS				94	90				86	79				82	79
Means (T/ha)		3.43	3.53	3.63	3.70	3.56	3.52	3.53	3.60	3.19	2.53	3.66	3.44	3.24	3.39	3.60
Locations		16	13	10	7	4	18	15	12	8	4	15	12	10	6	4

Notes

1 – Indexed for each site and then averaged. Index = 100 x (variety yield/site yield). Values differing by less than 3 within a column may not represent true difference in yield.

2 – HRS = hard red spring, EFS = eastern feed spring, SD = spring durum, HWS = hard white spring, a = awned.

3 – Cultivar yield ranking may vary from year to year. Decisions are therefore best made using data with the greatest number of years.

4 – These varieties are not widely accepted by all purchasers for quality reasons.

www.gocereals.ca

The Ontario Spring Wheat Performance Trials are conducted by the Ontario Cereal Crop Committee (OCCC). This chart contains the most recent information on spring cereals that were planted and harvested in 2008. For the complete trials, please visit the official site of the OCCC at www.gocereals.ca. Also available on this website is a “head to head” comparison feature which allows you to directly compare two specific varieties.

AGRICORP UPDATE

2008 Winter Wheat Production Insurance Plans

Record Yields and Low Claims Despite Challenging Harvest

This fall, Agricornp's winter wheat customers harvested a record crop of more than one million acres with yields that resulted in increased provincial averages by up to three bushels per acre. Producers successfully managed a high risk of fusarium contamination in early summer. Despite challenging harvest conditions, good yields resulted in insurance claims of only about \$5 million – down 30 percent from the previous year. In August 2008, winter wheat price levels were 30 to 35 percent higher than in 2007. However, the low 2008 claims reduced the impact of higher wheat prices on 2009 insurance premium rates.

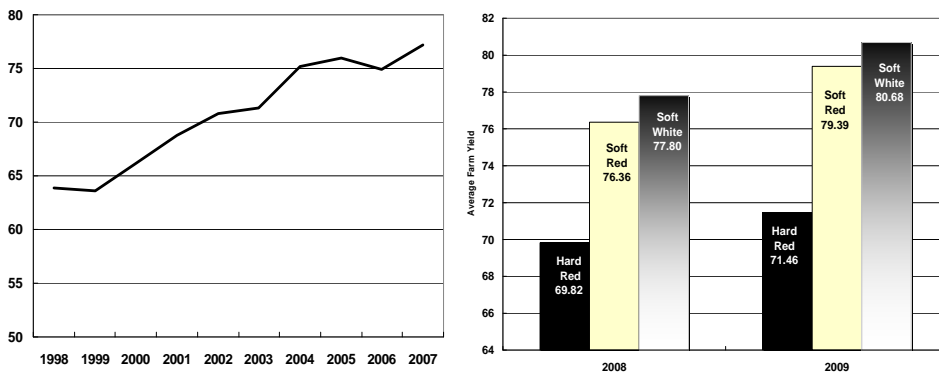
The floating claim prices for 2008 winter wheat are based on market prices in July and August:

- Soft red = \$5.9246 per bushel
- Soft white = \$5.9888 per bushel
- Hard red = \$6.0374 per bushel

Average Farm Yields Continue to Increase

Production Insurance provides producers with a guaranteed level of production based on their own actual yield history and chosen coverage level. Provincial average farm yields have increased steadily since 1998, as shown in the following charts.

Average Farm Yield (AFY) For Winter Wheat Plans (bu/acre 1998-2008)



Cold, Wet Harvest Challenges Spring Wheat Producers

Many red spring wheat producers felt the impact of the challenging harvest period and had their harvested wheat downgraded to feed grade. Almost half of Agricornp's spring wheat customers had their yield adjusted downward as a result of the 15 percent Feed Grade Quality Factor, which triggered more claims. For 2008, almost 25 percent of Agricornp's spring wheat customers submitted insurance claims totalling over \$1.4 million, more than double the amount for 2007. As a result of increased claims, the claim rate for 2008 spring wheat is expected to be higher than the long-term claim rate. The insurance floating claim price for hard red spring wheat for 2008 was \$7.4242 per bushel, based on market prices from August 1 to September 30, 2008.

Contact Information:

Production Insurance & RMP 1-888-247-4999 Email: contact@agricorp.com
 AgriStability 1-877-838-5144 Web: www.agricorp.com
 Monday to Friday 7 am to 5 p.m.

2009 Winter Wheat

More than 770,000 acres of winter wheat are now insured for 2009, the second highest number on record. Since about 70 to 75 percent of total winter wheat acres are typically enrolled in Production Insurance, this indicates a total 2009 winter wheat crop of more than one million acres.

More Producers Choose Fixed Claim Price Option

Production Insurance allows producers to choose either a fixed or a floating insurance claim price.

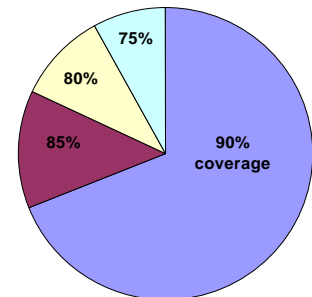
Fixed claim prices for 2009 winter wheat are:

- \$5.30 per bushel for soft red
- \$6.00 per bushel each for soft white and hard red winter wheat

These fixed claim price levels have resulted in a larger number of producers choosing the fixed claim price option for their 2009 winter wheat. For the 2009 crop year, 29 percent of the insured acres are covered under the fixed claim price option. This is up from 18 percent last year.

More Producers Choose Highest Coverage Level

Producers can choose one of four coverage levels ranging from 75 to 90 percent. For 2009, most producers once again chose the 90 percent coverage level as providing the best value for their money.



May 1 Deadline For Winter Wheat Coverage without Winterkill

Winter wheat producers who have not enrolled their 2009 winter wheat in Production Insurance can still apply in the spring for winter wheat coverage without winterkill. The deadline to apply for coverage is May 1, 2009. An adjuster will inspect your crop in the spring to ensure that you qualify.

50TH ANNIVERSARY

As we welcome in the new year, we say goodbye to our 50th Anniversary celebrations. The Ontario Wheat Producers' Marketing Board honoured our gold anniversary with a commemorative video detailing the challenges we have overcome and the successes of the past 50 years. The video featured past and current board members, OWPMB staff and wheat industry leaders.

The video highlighted our inception as a producer organization in 1958 and the evolution of our activities as the OWPMB adapted to meet the needs of Ontario's wheat producers.

Our 50th also marked a celebration of all the past directors of the board. Past and present directors were invited for a banquet on the eve of our 50th annual meeting to celebrate our achievements. The banquet featured dinner and entertainment by Dan Needles, writer of Letters from Wingfield Farms. Past chairmen were also presented with a watch as a thank you for their time served on the OWPMB.

Also in celebration of the OWPMB's half centennial, we shared a booth with Farmers Feed Cities! at the International Plowing Match and the Outdoor Farm Show.

FARMERS FEED CITIES!

The Farmers Feed Cities! campaign has been busy with a number of initiatives over the past few months and will continue to be through the new year. These projects have and will aim to expand the campaign's reach and raise its profile among the non-farm public in order to bridge the gap between consumers and farming. Some of the major initiatives are listed:

- The Ontario Harvest Gala on October 30th put the spotlight on numerous efforts by farm organizations to support the Ontario Association of Food Banks, including the Harvest of Hope program. Farmers Feed Cities sponsored a food station featuring breads, oils and dips made with grains and oilseeds. Various attendees from farm organizations, industry, government and the media were in attendance to both sample and celebrate the contributions of Ontario's farmers.
- The Harvest of Hope campaign was launched during harvest to garner donations from farmers to be distributed to Ontario's food banks in their time of need as a public goodwill investment for grain & oilseed producers. Participating this year are Agris Coop, Cargill, P&H, Southwest Ag and Thompsons with a total of 50 grain elevators across Ontario accepting donations. Thanks for all those who donated this year. If you didn't donate, please consider donating even a few bushels towards this great cause, the United Way will issue tax receipts for all donations.
- FFC is set to be launched in Manitoba in partnership with the Manitoba Farm Animal Council through a couple of events geared towards farmers and the public along with a website portal for supporters in that province. This will be done in cooperation with the Manitoba Farm Animal Council and the University of Manitoba, with the official launch aiming to take place in February, 2009.

Requests for display and promotional materials or general campaign inquiries can be directed to Scott at 519-767-4132 or scott@farmersfeedcities.com.

Ontario Grains and Oilseeds Update

Ontario Grains & Oilseeds (G&O) – which represents the safety nets needs of producers who grow corn, soybeans, wheat, coloured and white beans, seed corn, and canola – celebrated the successful continuation of year two of the three-year pilot program for the Risk Management Program (RMP). Despite higher prices in Spring 2008 nearly 90 percent of producers who received RMP payments in 2007 remained enrolled in year two of the three-year program.

Technical details for RMP are refined cooperatively by a committee that includes representatives from OMAFRA, Agricorp, and Ontario G&O.

Ontario G&O is committed to working with the Province to lay the groundwork for a permanent RMP that extends beyond 2009.

Federally, Ontario grain and oilseed producers are represented by the Ontario-Quebec Grain Farmers' Coalition (OQGFC), which is a member of the Canadian Federation of Agriculture (CFA). OQGFC has been working closely with CFA to lobby the federal government to adopt AgriFlex, a federal funding envelope that would allow for companion programming with regional flexibility.

While the federal Conservatives have refused to fund the RMP directly, AgriFlex would provide flexibility that would see funds administered to RMP and other companion programs in other sectors in Ontario and across Canada.

During the 2008 federal election campaign OQGFC saw a number of successes, including all major parties committing flexible funding dollars to all agricultural platforms. OQGFC will work to build on that success with all parties as they take a larger role in leadership within the federal government.

2009 ONTARIO CORN, SOYBEAN, WHEAT AND COLOURED BEAN CONFERENCE

5TH ANNUAL JOINT CONFERENCE
MARCH 10, 2009

London Convention Centre, London, Ontario

Ontario Corn Producers' Association Annual Meeting
March 9, 2009 – London Convention Centre

Ontario Soybean Growers Annual Meeting
March 9, 2009 – London Convention Centre

Ontario Wheat Producers' Marketing Board Annual Delegates Conference
March 11, 2009 – Hilton Hotel

The Joint Conference will begin on March 10, 2009 at 9:00 a.m. (registration open at 8:00 a.m.) with an excellent speakers' program lining up. A large trade show will provide valuable information for all corn, soybean and wheat cash crop farmers.

For Registration details and Trade Show participation contact Louise Bignell at 519-767-4126 or by email at louise.bignell@ontariowheatboard.com or visit the conference website at www.freewebs.com/jointconference

Resolutions to be considered at the Ontario Corn Producers' Association meeting should be submitted prior to February 13th to the OCPA office via fax (519-837-1674) or by email at kratz@ontariocorn.org. These can be county, regional or individual member resolutions. Resolutions can be presented at the meeting, if 100 copies are available for distribution at the beginning of the meeting.

REGISTRATION FORM

2009 Ontario Corn, Soybean, Wheat and Coloured Bean Conference and Banquet

March 9 to 11, 2009 – London Convention Centre

A block of rooms has been reserved until February 23rd at:

The Hilton London, 300 King Street, London (stdn \$119) 519-439-1661

Holiday Inn Express, 374 Dundas Street, London (stdn \$109) 519-661-0233

Joint Conference Day – Tuesday, March 10, 2009

Lunch Tickets # _____ @ \$15.00 Total \$ _____
Banquet Tickets # _____ @ \$40.00 Payment Enclosed \$ _____

Name: _____
Address: _____
Phone: _____

Please make cheques payable to Ontario Soybean Growers

Please pre-register before Tuesday, February 20th by mailing this form and payment to:

Conference Registration:

Ontario Wheat Producers' Marketing Board

100 Stone Road West, Suite 201, Guelph, Ontario N1G 5L3

Contact Louise for further registration information at 519-767-4126.

CANCELLATION POLICY:

Full refund granted for cancellations received one week prior to the event.

I am planning to attend the OCPA Annual Meeting on March 9th at 9:00 a.m.

I am planning to attend the OSG Annual Meeting on March 9th at 1:00 p.m.

I am an OWPMB Delegate/Alternate and will be attending the OWPMB delegates conference on March 11 at 8:00 a.m.